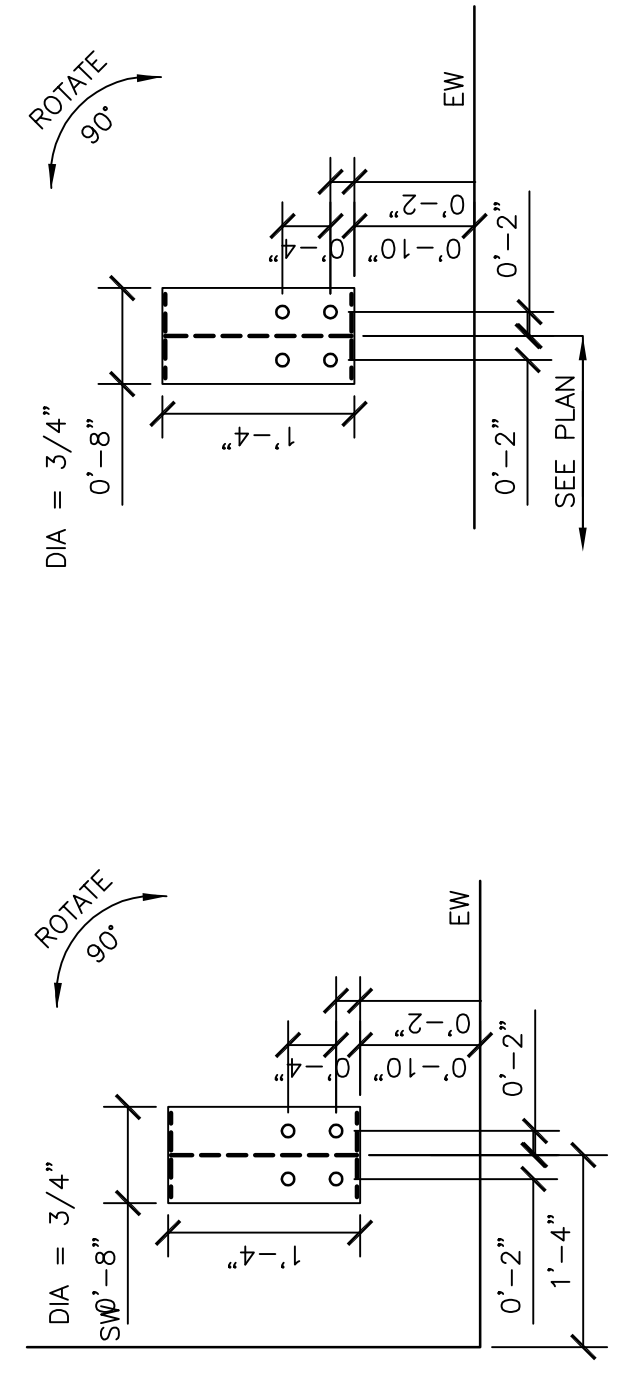
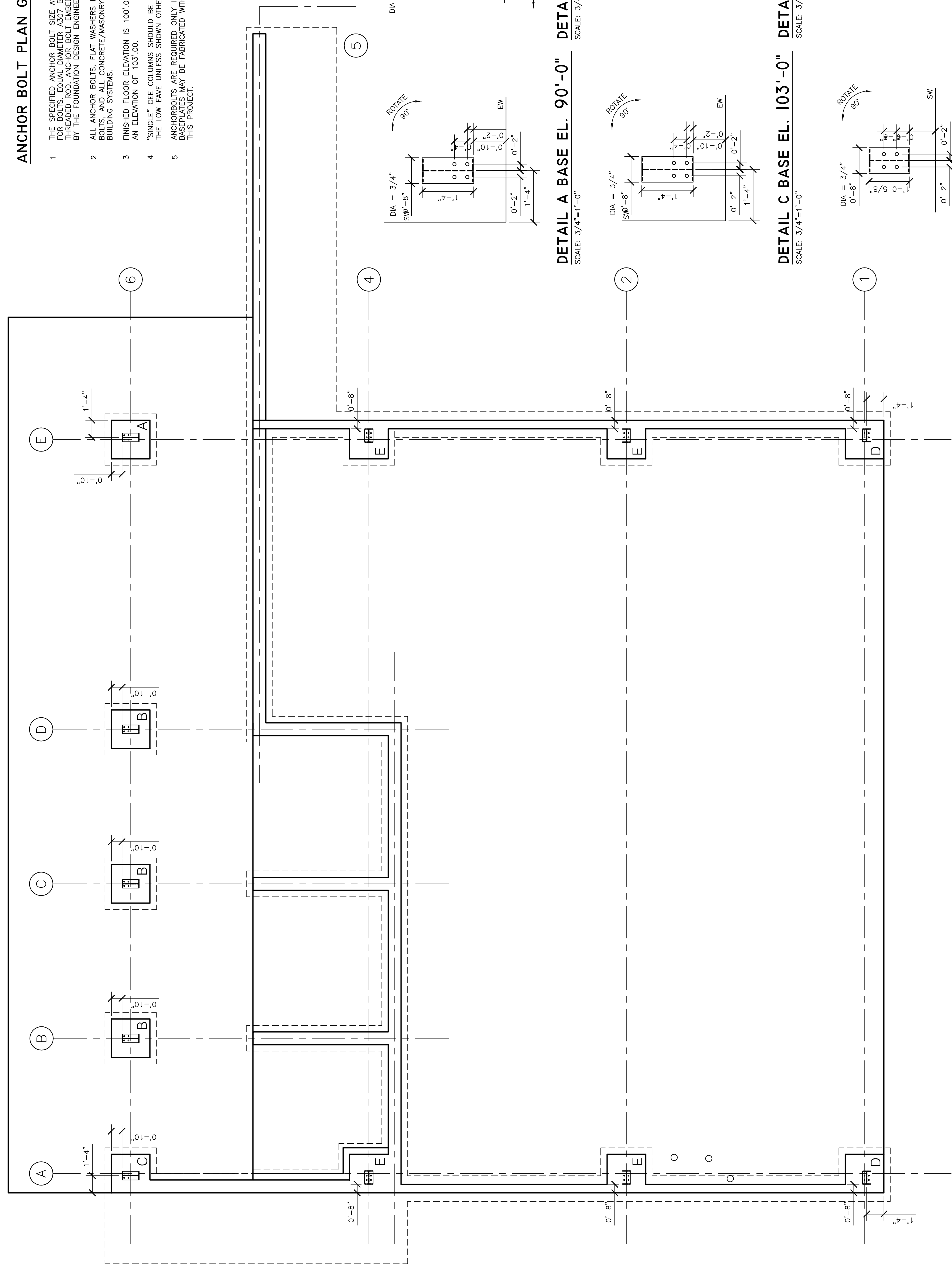
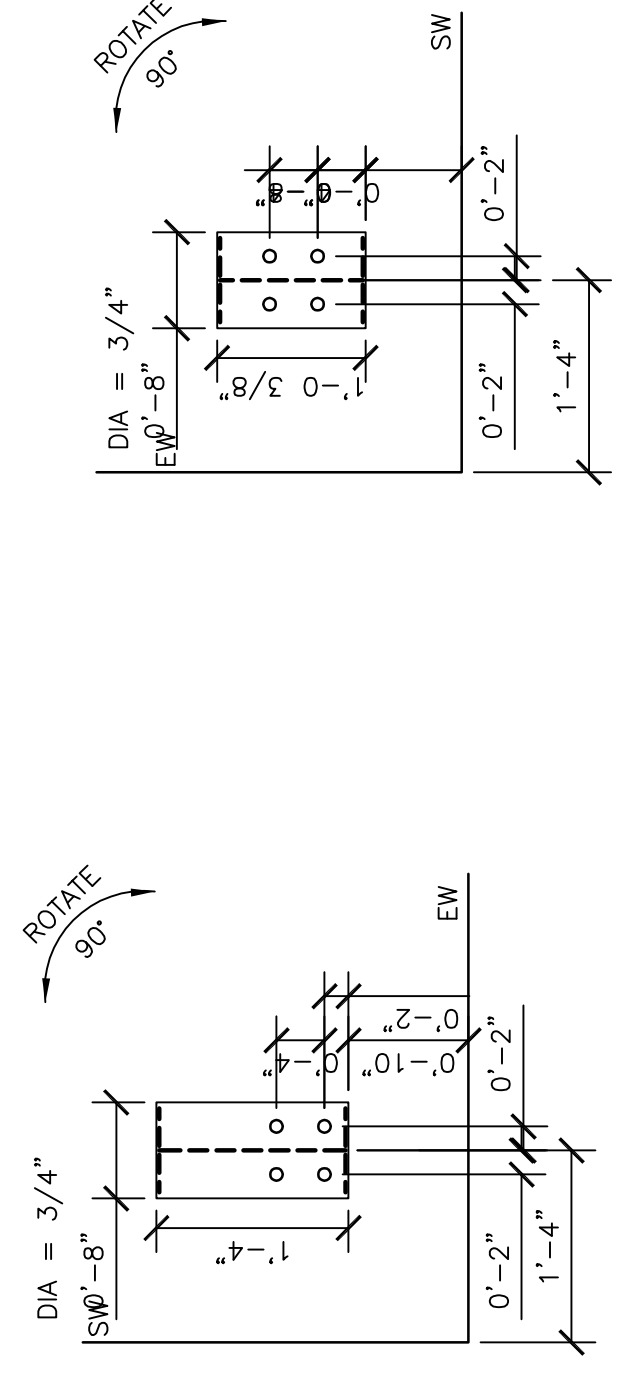


**ANCHOR BOLT PLAN GENERAL NOTES**

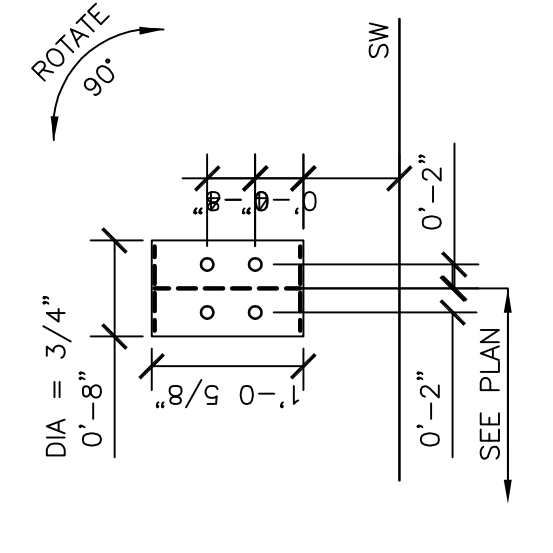
- 1 THE SPECIFIED ANCHOR BOLT SIZE ASSUMES A36 THREADED ROD MATERIAL AND 1/2" DIA. WASHERS AND NUTS. ALL ANCHOR BOLTS SHALL BE USED IN CONFORMANCE WITH THE FOUNDATION DESIGN ENGINEER'S RECOMMENDATIONS. THE ANCHOR BOLT EMBEDMENT LENGTH IS TO BE DETERMINED BY THE FOUNDATION DESIGN ENGINEER.
- 2 ALL ANCHOR BOLTS, FLAT WASHERS FOR ANCHOR BOLTS, EXPANSION BOLTS, AND ALL CONCRETE/MASONRY IMBEDS ARE NOT BY NUCOR BUILDING SYSTEMS.
- 3 FINISHED FLOOR ELEVATION IS 100'.00. EAST AND WEST WALLS WILL HAVE AN ELEVATION OF 103'.00.
- 4 "SINGLE" CEE COLUMNS SHOULD BE ORIENTED WITH THE "TOES" TOWARD THE LOW EAVE UNLESS SHOWN OTHERWISE.
- 5 ANCHOR BOLTS ARE REQUIRED ONLY IN THE QUANTITIES SPECIFIED. BASEPLATES MAY BE FABRICATED WITH MORE HOLES THAN NEEDED FOR THIS PROJECT.



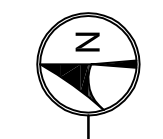
**DETAIL B BASE EL. 90'-0"**  
SCALE: 3/4"=1'-0"



**DETAIL D BASE EL. 103'-0"**  
SCALE: 3/4"=1'-0"

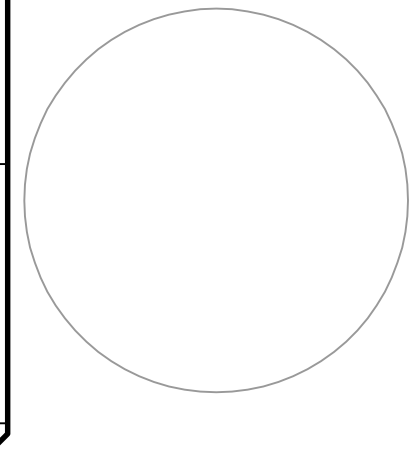


**FLOOR PLAN ANCHOR BOLT LOCATIONS**  
SCALE: 1/4"=1'-0"



A NEW RECYCLING BUILDING FOR  
LONDON, OHIO  
NORTH CENTRAL OHIO SOLID WASTE DISTRICT  
233 JENKINSON DRIVE  
LONDON, OHIO 43140  
MADISON COUNTY

NO.	CORR. LTR. DATE	REVISED ISSUE DATE



DESIGN BY PROFESSIONAL:  
**PIZZINO ENGINEERING & CONSULTING, LLC.**  
WILLIAM J. PIZZINO, P.E.  
9495 SR 161  
PLAIN CITY, OHIO 43064

**CONCEPT BUILDINGS, INC.**  
MARYSVILLE, OHIO  
(937) 644-0605

THIS SHEET:  
FLOOR PLAN ANCHOR BOLT LOCATIONS

PROJECT: RECYCLING BLDG  
SHEET: 5 OF 9  
DATE: 09-19-07  
DRAWN BY: P.R.M.  
SCALE: AS NOTED  
**A.3**