

**ELECTRICAL NOTES**

- ALL ELECTRICAL WORK SHALL COMPLY WITH THE REQUIREMENTS OF CHAPTER 27, OBC AND 4101-2-00 NEC, AND NFPA STANDARD NO. 70 AND SHALL BE SUBJECT TO APPROVAL OF THE DISTRICT ELECTRICAL INSPECTOR.
- EXT AND EMERGENCY LIGHTS TO BE WIRED IN ACCORDANCE WITH NEC ARTICLE 700-12 (F) AND CHAPTER 27, SECTION 2702 OBC.
- THE BRANCH CIRCUIT FEEDING THE UNIT EQUIPMENT EXIT SIGNS SHALL BE THE SAME BRANCH CIRCUIT AS THAT SERVING THE NORMAL LIGHTING IN THE AREA AND SHALL BE CONNECTED AHEAD OF ANY LOCAL SWITCHES. SEC. 1003.2.10.5 OBC AND 700-12 (F) NEC.
- THE BRANCH CIRCUIT FEEDING THE UNIT EQUIPMENT FOR EMERGENCY MEANS OF EGRESS LIGHTING SHALL BE THE SAME BRANCH CIRCUIT AS THAT SERVING THE NORMAL LIGHTING IN THE AREA AND SHALL BE CONNECTED AHEAD OF ANY LOCAL SWITCHES. ARTICLE 700-12 (F) NEC.
- IN ALL BUILDINGS, ROOMS, OR SPACES REQUIRED TO HAVE MORE THAN ONE EXIT OR EXIT ACCESS, ALL REQUIRED MEANS OF EGRESS SHALL BE INDICATED WITH APPROVED SIGNS READING "EXIT" COMPLYING WITH SECTION 1003.2.10.3 OBC.
- EXIT SIGNS SHALL COMPLY WITH SECTIONS 1003.2.10.1 THROUGH 1003.2.10.5 PER THE OBC REQUIREMENTS.
- ALL EXIT SIGNS SHALL BE ILLUMINATED AT ALL TIMES THAT THE BUILDING IS OCCUPIED TO ASSURE CONTINUED ILLUMINATION FOR A DURATION OF NOT LESS THAN ONE (1) HOUR IN CASE OF POWER LOSS. EXIT SIGN SHALL BE CONNECTED TO EMERGENCY ELECTRICAL SYSTEM THAT COMPLIES WITH SECTION 2702 OBC OR BE AN APPROVED SELF-LUMINOUS TYPE. SECTION 1003.2.11.2 OBC.
- ALL 120 VOLT RECEPTACLES IN DETAIL AREA TO BE GFCI PROTECTED. MOUNTING HEIGHT TO BE 48 INCH A.F.F.
- SERVICE PANEL TO MEET AVAILABLE FAULT CURRENT RATING.
- ALL CONCEALED WIRING TO BE TYPE NM, EXPOSED WIRING TO BE IN RACEWAY. ANY WIRING WITHIN AREAS CLASSIFIED AS CLASS 1, DIV. 2 SHALL COMPLY WITH NEC ART. 501.10(B).
- ANY CONDUIT RUNS THAT PASS THROUGH A CLASS 1, DIVISION 2 LOCATION SHALL BE SEALED OR INSTALLED PER ART. 501.15(B).
- ELECTRICAL CLASSIFICATION-SPECIAL PURPOSE INDUSTRIAL OCCUPANCY (FEDERAL ELECTRICAL CODE ARTICLE 517)
- MINOR REPAIR GARAGE (NFPA 30A, 3.3.12.2)
- ALL SUBFLOOR AREAS RATED CLASS 1 GROUP D DIV. 2

PANEL "B"					
LOAD	DESCRIPTION	WIRE #	BREAKER	CIRCUIT	LOAD
1200	ALIGNMENT MACHINE	12	20A-1P	1	4800
	SPACE	3	30A-2P	10	
	SPACE	4			
1200	AIR DRIVER/EXH FAN	12	20A-1P	7	3600
	SPACE	5	20A-2P	12	
4320	A/C COMPRESSOR	10	20A-2P	11	10000
	SPACE	9			
7000	AIR HANDLER	8	40A-2P	13	10000
	SPACE	15			
		16			
		17			
		19			
		20			
		21			
		22			
		23			
		24			
		25			
		26			
		27			
		28			
		29			
		30			
		31			
		32			
		33			
		34			
		35			
		36			
		37			
		38			
		39			
		40			
		41			
		42			
13720	TOTAL LOAD 1-41				28400
	TOTAL CKT 1-42				42120

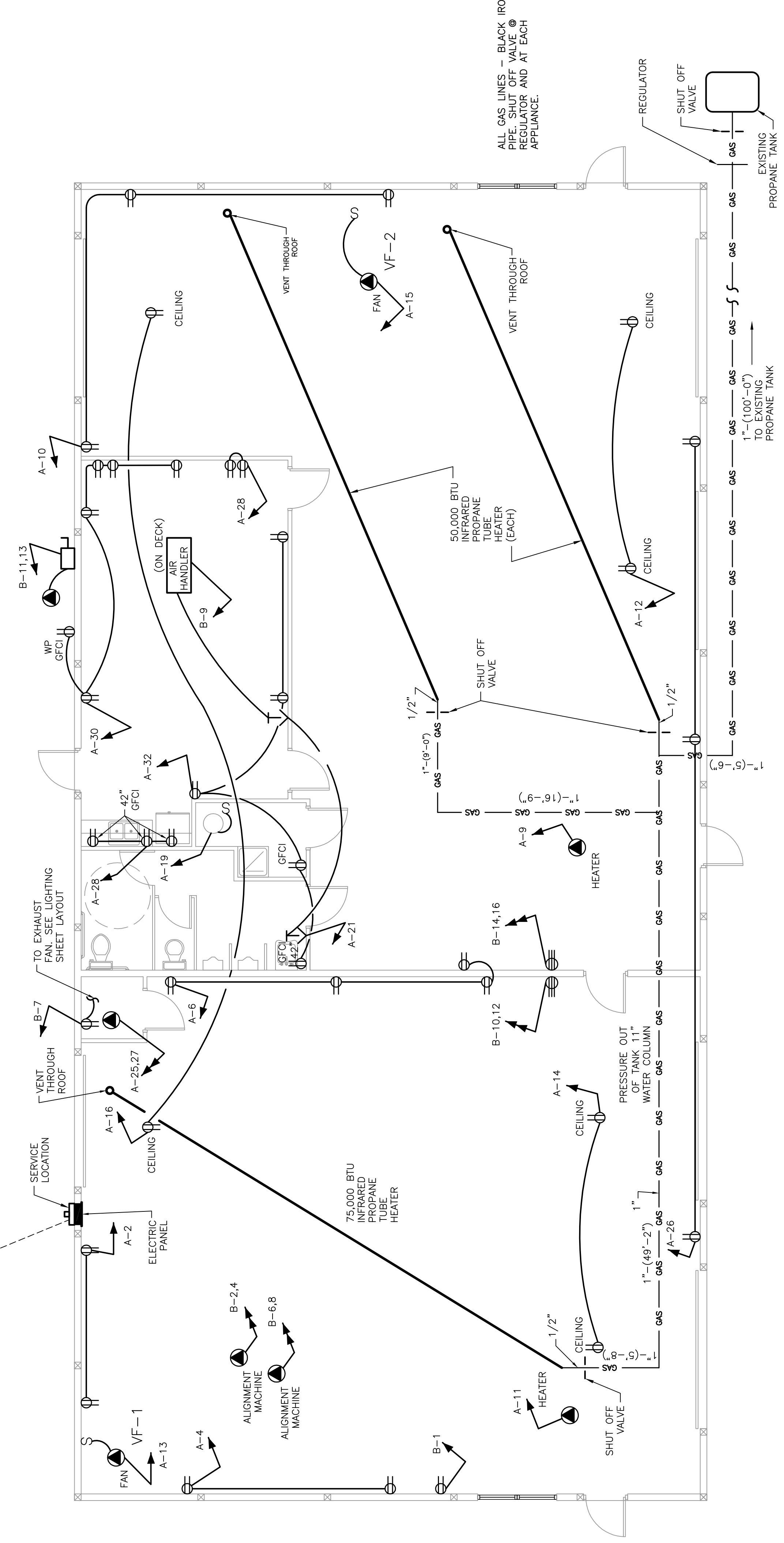
PANEL "A"					
LOAD	DESCRIPTION	WIRE #	BREAKER	CIRCUIT	LOAD
972	LIGHTS	12	20A-1P	1	360
946	LIGHTS	12	20A-1P	3	360
788	LIGHTS	12	20A-1P	4	360
588	LIGHTS	12	20A-1P	5	540
720	TUBE HEAT	12	20A-1P	8	720
720	TUBE HEAT	12	20A-1P	9	720
600	EXHAUST FAN	12	20A-1P	10	1440
600	EXHAUST FAN	12	20A-1P	11	1440
600	EXHAUST FAN	12	20A-1P	12	1440
600	EXHAUST FAN	12	20A-1P	13	1440
600	EXHAUST FAN	12	20A-1P	14	1440
600	EXHAUST FAN	12	20A-1P	15	1440
600	EXHAUST FAN	12	20A-1P	16	1440
2000	HOT WATER HTR	12	20A-1P	17	
	SPACE	19			
	SPACE	20			
	SPACE	21			
	SPACE	22			
	SPACE	23			
	SPACE	24			
4800	AIR COMPRESSOR	8	40A-2P	20A-1P	540
	SPACE	25			
	SPACE	26			
	RECEPTACLES	27			360
	RECEPTACLES	28			360
	RECEPTACLES	29			540
	RECEPTACLES	30			540
	RECEPTACLES	31			720
	RECEPTACLES	32			720
	RECEPTACLES	33			720
	RECEPTACLES	34			720
	RECEPTACLES	35			720
	RECEPTACLES	36			720
	RECEPTACLES	37			720
	RECEPTACLES	38			720
	RECEPTACLES	39			720
	RECEPTACLES	40			720
	RECEPTACLES	41			720
	RECEPTACLES	42			720
13414	TOTAL LOAD 1-41				9180
	TOTAL CKT 1-42				22594

42120VA (LESS A/C LOAD)-4320=37800  
 37800VA/240 VOLTS = 157.5 AMPS  
 TOTAL PANEL "A" AND "B" = 251.5 AMPS

NAME	PH	SIZE	PRI. V	SEC. V	#Z	SCA	L-L	SCA	L-L
TA	3Ø	75	7200	240	1/2	26,042		26,042	

**CALCULATION OF FAULT CURRENT**

FAULT SCA SOURCE = TA PRIMARY INFINITE  
 SCA AVAILABLE = INFINITE  
 LENGTH UNITS = FEET  
 SYSTEM VOLTAGE = 240  
 SYSTEM PHASE = 1 PHASE



**ELECTRICAL LAYOUT - POWER AND GAS LINE LAYOUT**  
 SCALE: NTS

A NEW BUILDING FOR SAM JACKSON  
 AUTOBODY BLDG #3  
 UNION CO.  
 RAYMOND, OHIO 43067  
 LIBERTY TOWNSHIP

NO.	CORR. LTR	DATE	REVISED	ISSUE DATE
				08-08-07

DESIGN BY PROFESSIONAL:  
**PIZZINO ENGINEERING & CONSULTING, LLC.**  
 WILLIAM J. PIZZINO, P.E.  
 9495 SR 161  
 PLAIN CITY, OHIO 43064

**CONCEPT BUILDINGS, INC.**  
 MARYSVILLE, OHIO  
 (937) 644-0605

THIS SHEET:  
 ELECTRICAL LAYOUT -

PROJECT	NEW BLDG.	SHEET	7 OF 8
DATE	06-28-07	DRAWN BY	P.R.M.
SCALE	AS NOTED		

**E.2**